

# OPS

tuki 2016



# Curriculum Design 2016 – Support Programme for the Curriculum Design Process



Helsinki University Viikki Teacher Training School

Ulla Ilomäki-Keisala

[ulla.ilomaki-keisala@helsinki.fi](mailto:ulla.ilomaki-keisala@helsinki.fi)

+358 40 189 8959

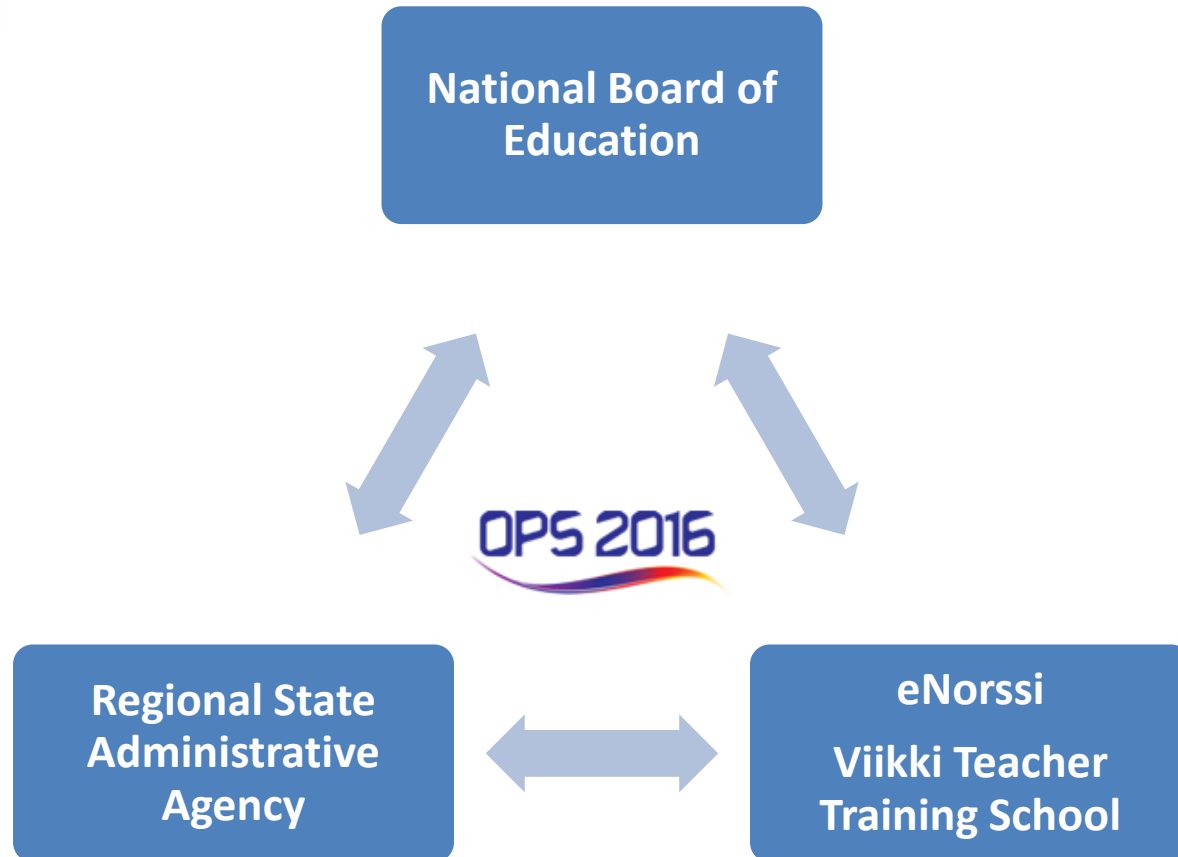
# WHAT IS OPS tuki 2016 ?

- Curriculum Design 2016 – Support Programme for Curriculum Design Process
- Beginning in autumn 2013 and continuing until the end of 2014, OPS tuki 2016 is a training programme implemented by eNorssi together with all the teacher training schools, in which the network of schools are functioning as the support organization for the local curriculum design process.
- Viikki Teacher Training School is responsible for designing the training, finance, and technical support.
- OPS tuki 2016 clearly strengthens the position of teacher training schools and their in-service training.

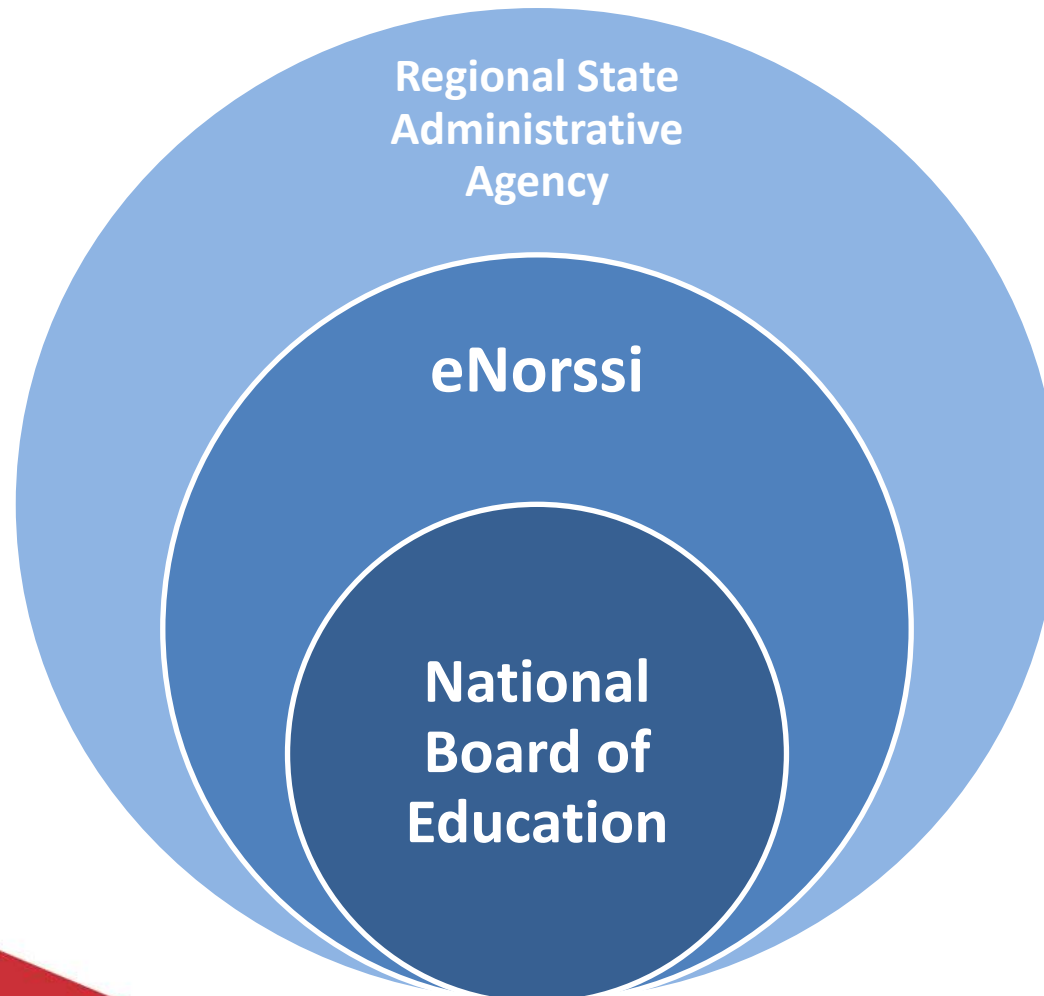
# IN COOPERATION WITH



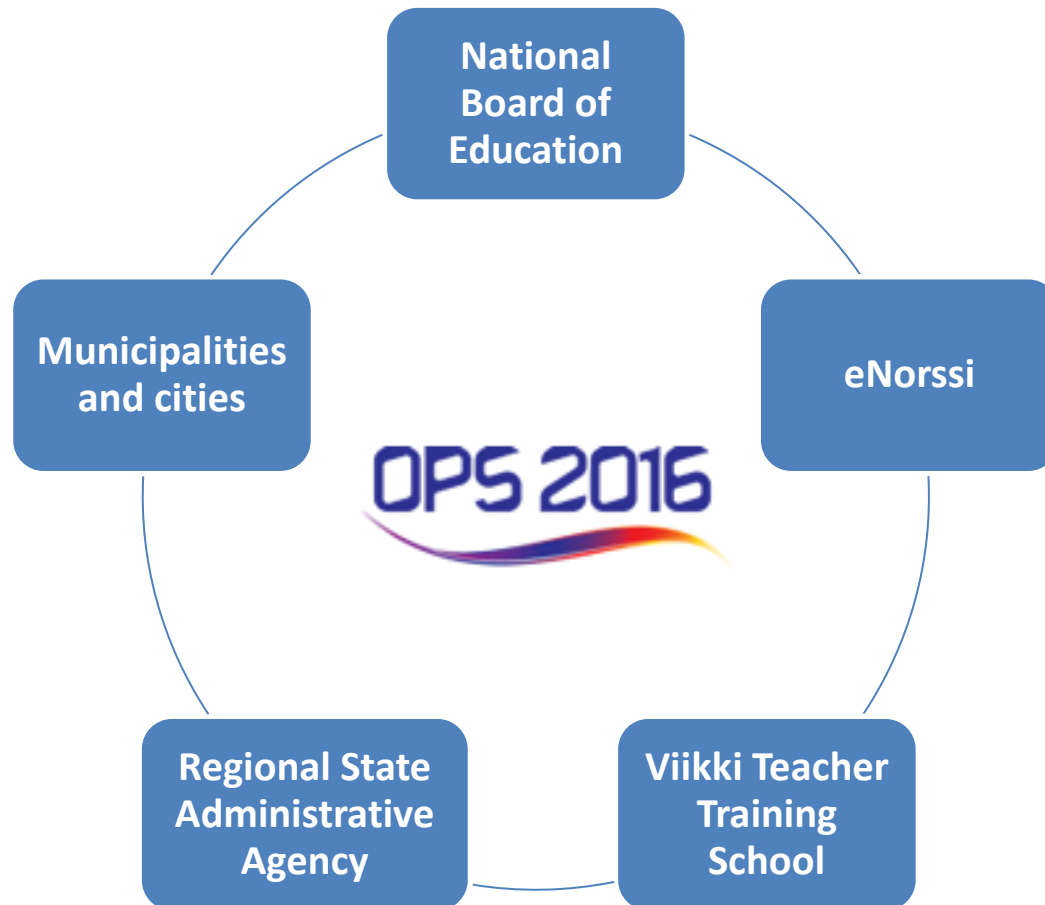
# THE START OF COOPERATION



# GUIDANCE BY THE NATIONAL BOARD OF EDUCATION



# NATIONAL AND REGIONAL CURRICULUM REFORM

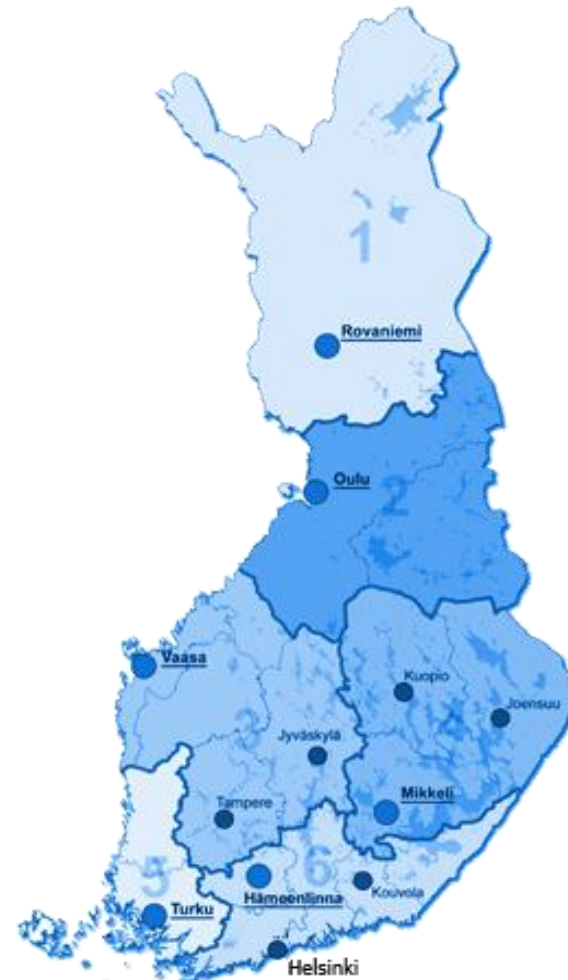


# REGIONAL STATE ADMINISTRATIVE AGENCIES



1. Lapland
2. Northern Finland
3. Western and Central Finland
4. Eastern Finland
5. Southern Finland
6. South-western Finland
7. Service Unit for Swedish Education

Source: [www.avi.fi](http://www.avi.fi) (map)





# TEACHER TRAINING SCHOOLS

1. Lapland: *Rovaniemi*
2. Northern Finland: *Oulu* (2)
3. Western and Central Finland: *Jyväskylä, Tampere, and Vaasa*
4. Eastern Finland: *Joensuu and Savonlinna*
5. Southern Finland: *Helsinki* (2)
6. Southwestern: *Turku and Rauma*
7. Swedish-speaking: *Vaasa*



- To plan, produce and carry out a nationwide guidance and training model for the curriculum reform.
- To organize training events in different parts of the country, aimed at putting into motion, guiding, advancing, and maintaining the curriculum reform processes, beginning in the autumn of 2013 and continuing until the end of 2014.
- Most importantly, to control the curriculum process and update the methods of planning the curriculum.

# ORGANIZATION

1. Guidance group
2. Working committee
3. National network
4. Local network

# ORGANIZATION

Members of the guidance group:

Reijo Honkanen	<i>(Helsinki University Viikki Teacher Training School)</i>
Heli Lepistö	<i>(Savonlinna University Practice School)</i>
Heikki Happonen	<i>(University Teacher Training School at Joensuu)</i>
Soili Mynttinen	<i>(Viikki Teacher Training School)</i>
Ulla Ilomäki-Keisala	<i>(Viikki Teacher Training School)</i>
Ari Myllyviita	<i>(Viikki Teacher Training School)</i>
Elisabeth Backlund-Kärjenmäki	<i>(Vaasa Teacher Training School)</i>
Seija Blomberg	<i>(Oulu University Teacher Training School)</i>
Kirsti Koski	<i>(University of Jyväskylä Teacher Training School)</i>
Mikko Horila	<i>(Tampere Teacher Training School)</i>
Kari Lehtola	<i>(Eastern Finland Regional State Administrative Agency)</i>

Representative of the National Board of Education

## Members of the Working Committee:

Heli Lepistö *(project coordinator,  
Savonlinna University Practice School)*

Soili Mynttinen *(finance coordinator,  
Helsinki University Viikki Teacher Training  
School)*

Ulla Ilomäki-Keisala *(training coordinator,  
Helsinki University Viikki Teacher Training  
School)*

Ari Myllyviita *(technical support,  
Helsinki University Viikki Teacher Training  
School)*

# OPS tuki 2016 ORGANIZATION

## National network:

- Heli Lepistö (*project coordinator*)
- Ulla Ilomäki-Keisala (*training coordinator*)
- eNorssi's Curriculum coordinators > teacher training school lecturers will receive training to become regional trainers
- Representative of the National Board of Education
- Kari Lehtola, *Eastern Finland Regional State Administrative Agency*
- Experts from the Department of Teacher Education and from the teacher training schools

# THE STRUCTURE AND TIMETABLE OF THE TRAINING OFFERED BY THE NATIONAL NETWORK: MODULES 1 TO 4

## Module 1

**The school of the future – Operational culture in change** (2 days contact education + working via ACP, September 2013, 4.-5.9.2013)

## Module 2

**The school of the future – Learning and studying in change** (2 days contact education + working via ACP  
November 2013,  
13.-14.11.2013)

## Module 3

**The school of the future – Teachership in change** (2 days contact education, January 2014 + working via ACP,  
15.-16.1.2013)

## Module 4

**The school of the future – Subjects and evaluation in change** (2 days contact education + working via ACP, September 2014)

# THE CONTENTS AND STUDY TASKS OF THE NATIONAL NETWORK: MODULES 1 TO 4

## Module 1

What is OPStuki 2016? Training the national network: structure and execution  
 Starting the process: knowing the process!  
 Basic information about the curriculum reform 2016 – What will change?  
 Changes in the operational culture  
 A well-being school that also learns  
 Basic values and discussions of values  
 Setting the curriculum process in motion

Study task: How to build a training day based on the contents?

## Module 2

New concept behind learning  
 Operational and learning environment and today's demands  
 Studying and learning  
 Extensive know-how  
 Approaches  
 Promoting pupil participation

Study task: How to build a training day based on the contents?

## Module 3

The role and changing job description of the teacher  
 Good teaching  
 Collaboration between home and school  
 Partners and interest groups involved in planning the curriculum

Study task: How to build a training day based on the contents?

## Module 4

The objectives and contents of subjects  
 Integration and learning units  
 How will evaluation change?  
 Evaluating learning  
 Evaluation and cooperation in transitional stages  
 Self-evaluation of the school and developing school work

Study task: How to build a training day based on the contents?



# COMMUNICATIONS OF THE NATIONAL NETWORK

1. eNorssi's homepage [www.enorssi.fi](http://www.enorssi.fi)
2. Channels used by the regional agencies:  
homepages and municipal communications
3. [www.ops2016.fi](http://www.ops2016.fi)
4. [www.oph.fi](http://www.oph.fi)
5. Social media  
(Facebook search word **OPS2016**)

# IMPACTS OF NATIONAL TRAINING

- Offering uniform and extensive curriculum process training at a national level
- Piloting curriculum processes – producing web-based material, drawing on authentic environments and processes
- Producing support material to help national and local curriculum design work in a cost-effective manner
- Distributing equal information to comprehensive and upper secondary schools in Finland
- Including teacher training in the curriculum design process in an extensive manner

## Local network:

- eNorssi OPStuki 2016's local trainers
- eNorssi's Curriculum working group
- Curriculum working groups within teacher training schools and lecturers participating in basic design work
- Regional State Administrative Agency
- Municipalities and cities in the area of the Agency, education personnel and various interest groups
- Experts of the various Departments of Teacher Education and teacher training schools

# STRUCTURE AND TIMETABLE OF THE TRAINING OFFERED BY THE NATIONAL NETWORK, CARRIED OUT IN THE AGENCY AREAS

Workshops organized by sub-regions of the country in the agency areas :

The school of the future – operational culture in change

*(2 days of contact education, October 2013 in different parts of Finland)*

Workshops organized by sub-regions of the country in the agency areas : The school of the future –

Learning and studying in change *(2 days of contact education, January 2014 in different parts of Finland)*

Workshops organized by sub-regions of the country in the agency areas : The school of the future –

Teachership in change *(2 days of contact education, April 2014 in different parts of Finland)*

Workshops organized by sub-regions of the country in the agency areas :

The school of the future – Subjects and evaluation in change *(2 days of contact education + 1 day working via ACP, October 2014)*

# PLACES OF REGIONAL TRAINING AND HOSTING SCHOOLS

- **Lapland:** Rovaniemi and Tornio (*Teacher Training School of the University of Lapland & Helsinki University Teacher Training School*)
- **Northern Finland:** Oulu and Kajaani (*Oulu University Teacher Training School*)
- **Western and Central Finland:** Tampere and Jyväskylä (*Tampere Teacher Training School & University of Jyväskylä Teacher Training School*)
- **Eastern Finland:** Savonlinna and Joensuu (*Savonlinna Teacher Training School & The University Teacher Training School at Joensuu*)
- **Southern Finland:** Helsinki and Kouvola (*Helsinki University Teacher Training School & The Normal Lyceum of Helsinki*)
- **South-Western Finland:** Turku ja Rauma (*Teacher Training School of Turku University & Rauma Teacher Training School*)
- **Swedish-speaking areas:** Tampere, Turku, Helsinki and Vaasa (*Vaasa Swedish-speaking Teacher Training School*)

> **52 workshops in total**

# EXAMPLES OF COMMUNICATIONS OF THE NATIONAL NETWORK

1. eNorssi's homepage [www.enorssi.fi](http://www.enorssi.fi)
2. Channels used by the Regional Agencies: homepages and municipal communications
3. [www.ops2016.fi](http://www.ops2016.fi)
4. [www.oph.fi](http://www.oph.fi)
5. Social media  
(Facebook search word **OPS2016**)

# OPStuki 2016 – Training to support local curriculum design

The training consists of **four workshops in total**, beginning in the autumn of 2013 and ending at the end of 2014.

## During the training:

- broaden knowledge on the curriculum and knowledge base,
- strengthen the skills needed to lead and coordinate a local process,
- enhance qualifications to develop the approaches employed in the curriculum process and increase the transparency of the process and cooperation,
- support the connection between local and national curriculum design.

# REGIONAL WORKSHOPS

## Characteristics of the work completed in regional workshops:

1. inclusive and interactive training to start and guide the curriculum process,
2. looking for and sharing new approaches and encouraging co-learning,
3. common understanding, a culture of discussion, and cooperation,
4. offering equal support in curriculum design work in different parts of Finland.



# CONTENTS OF WORKSHOPS:

## WORKSHOP 1

### **School of the future – Operational culture in change**

- What is OPStuki 2016?
- The basis of the curriculum reform 2016 – What will change?
- Changes in the operational culture.
- A well-being school that learns.
- Basic values and discussions of values.
- Starting the process of curriculum reform.

# WORKSHOP CONTENTS:

## WORKSHOP 2

### **The school of the future – Learning and studying in change**

- A new concept behind learning
- Operational and learning environment and today's demands
- Studying and learning
- Extensive know-how
- Approaches
- Promoting pupil participation

# WORKSHOP CONTENTS:

## WORKSHOP 3

### **The school of the future – Teachership in change**

- The teacher's changing role and job description
- Good teaching
- Collaboration between home and school
- Partners and interest groups participating in the curriculum design work

# WORKSHOPS CONTENTS:

## WORKSHOP 4

### **The school of the future – Subjects and evaluation in change**

- The objectives and contents of the subjects
- Integration and learning units
- How will evaluation change?
- Evaluating learning
- Evaluation and cooperation in transitional stages
- Self-evaluation of the school and developing school work

# TRAINERS IN LAPLAND

*Teacher Training School of the University of  
Lapland :*

Anne Ervast

*Helsinki University Viikki Teacher Training School:*

Ulla Ilomäki-Keisala

# TRANERS IN NORTHERN FINLAND

*Oulu University Teacher Training School:*

Mervi Kemppainen

Terhi Ylöniemi

# TRAINERS IN WESTERN AND CENTRAL FINLAND

*Tampere Teacher Training School :*

Anu Eerola

Jaana Inki

*University of Jyväskylä Teacher Training School :*

Marita Kontoniemi

Tuuli Murtorinne

# TRAINERS IN EASTERN FINLAND

*Savonlinna University Practice School:*

Heli Lepistö

Merja Kuosmanen

*University Teacher Training School at Joensuu:*

Mervi Holopainen

Jaakko Väisänen



# TRAINERS IN SOUTH- WESTERN FINLAND

*Rauma Teacher Training School :*

Tuija Saarivirta

Paula Äimälä

*Teacher Training School of Turku University:*

Taina Wewer

Viveca Himberg-Rintanen

# TRAINERS IN SOUTHERN FINLAND

*Helsinki University Viikki Teacher Training School:*

Ulla Ilomäki-Keisala

Sari Muhonen

Arto Vaahtokari

*Normal Lyceum of Helsinki:*

Elina Mantere

Hannes Vieth

# SWEDISH-SPEAKING TRAINERS

*Vaasa Swedish-speaking Teacher Training School :*

Annika Lassus

Tommy Nordman

# IMPACT OF REGIONAL TRAINING

- To organize training that is uniform and extensive on a national scale, aimed at guiding the curriculum process. The training is directed at those responsible for local curriculum design work
- To distribute support material
- To broaden regional training cooperation: regional agencies, teacher training units, teacher training schools

# OBJECTIVES OF NATIONAL AND REGIONAL TRAINING

1. Participative and interactive training aimed at starting and guiding the curriculum process
2. Looking for new operational methods and sharing in addition to promoting co-learning
3. Dialogue, a culture of discussion, and cooperation
4. Guaranteeing equality in curriculum planning work and customer direction in different parts of Finland
5. Rationality of the use of resources: clear roles, a common model
6. A culture of feedback: mutual support and help in addition to flexibility in operations and in the distribution of work
7. Common forums: Bring and take!



OPETUSHALLITUS  
UTBILDNINGSTYRELSEN

OPS 2016



eNORSSI



OPS tuki 2016



Aluehallintovirasto

# OPS

tuki 2016

